

Recognition-Difficulty-Aware Hidden Images Based on Clue-map

(Supplementary Material)

Samples used in the first case of the user study



(a) Background/Foreground



(b) Our method

Examples 1-3

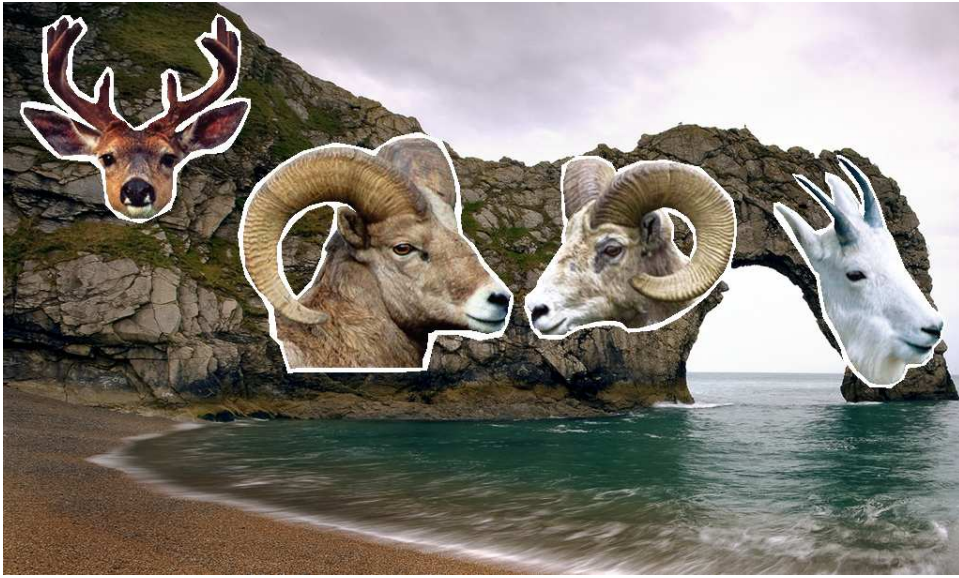


(c) [CHM*10]



(d) [DJM12]

Examples 1-3



(e) Background/Foreground



(f) Our method



(g) [CHM*10]



(h) [DJM12]

Examples 4-7



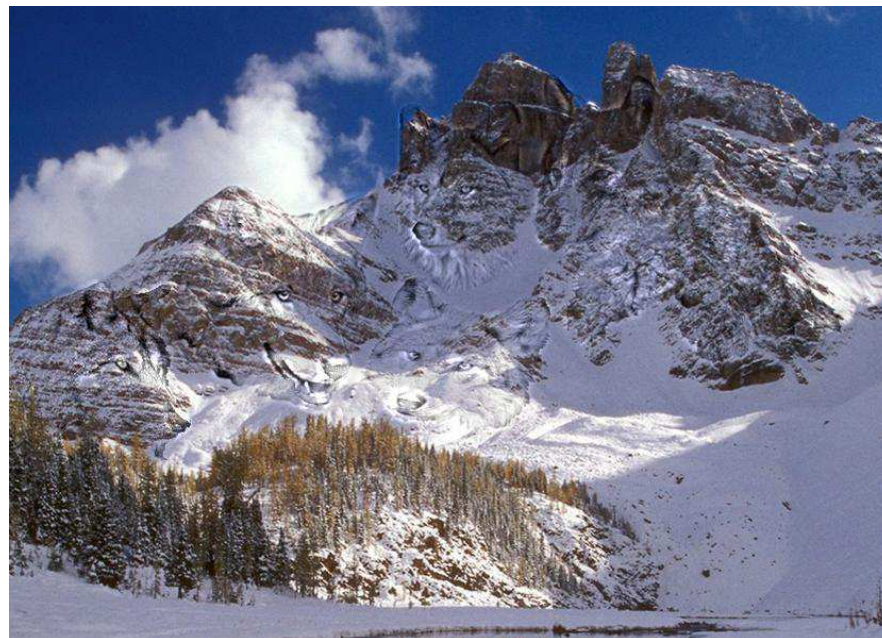
(i) Background/Foreground



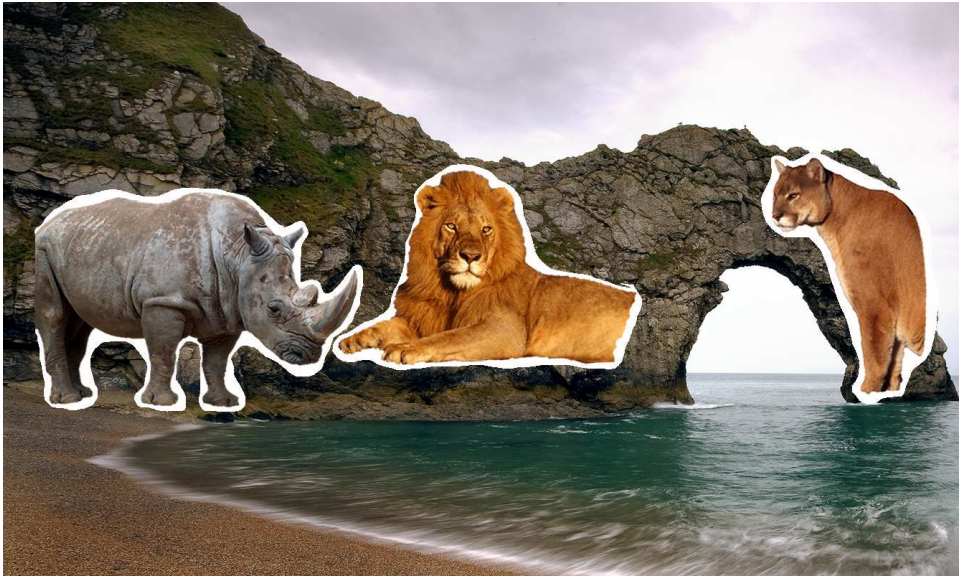
(j) Our method



(k) [CHM*10]



(l) [DJM12]



(m) Background/Foreground



(n) Our method



(o) [CHM*10]



(p) [DJM12]

Examples 13-15

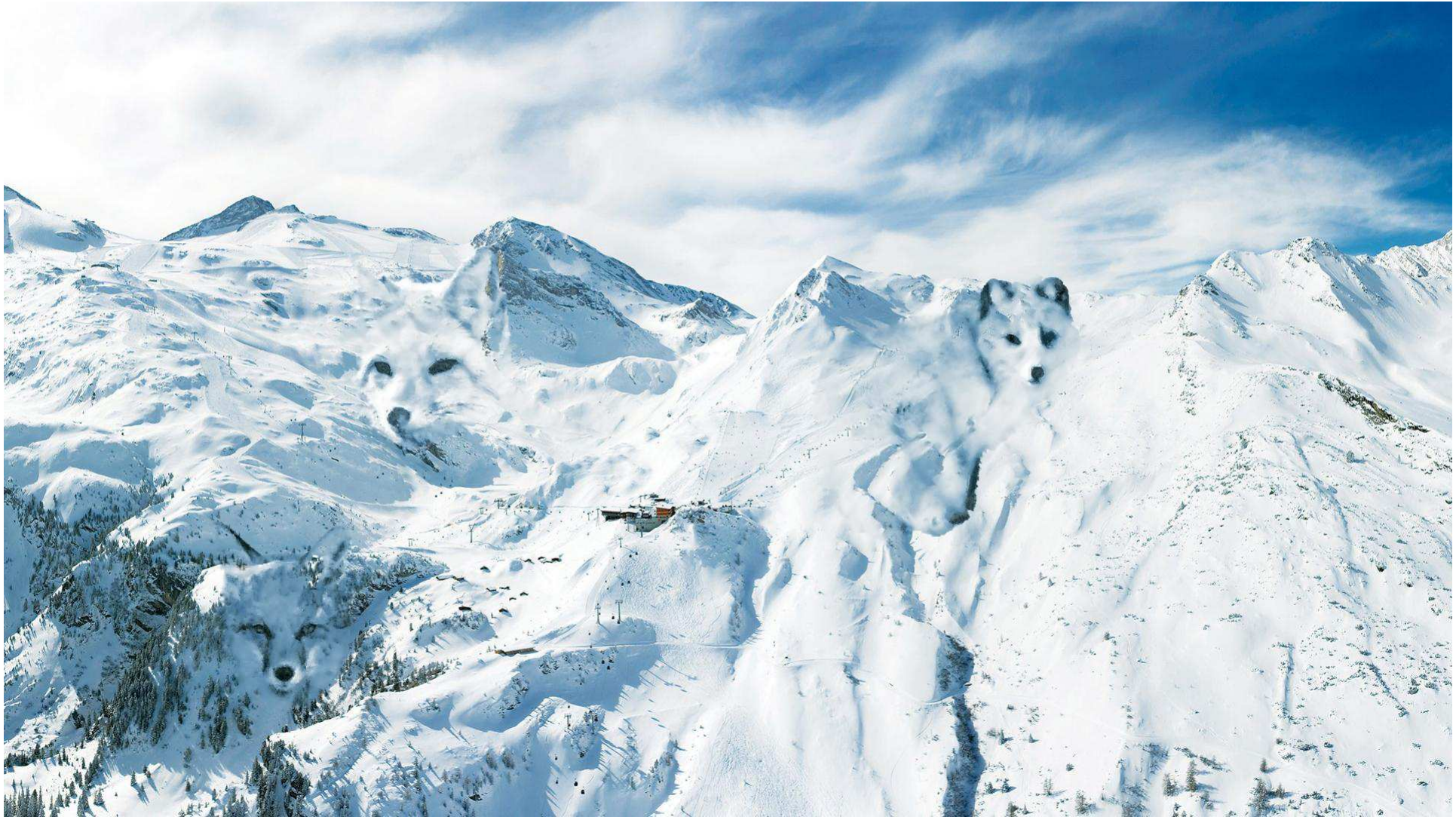
More results



Result 1: Audrey Hepburn



Result 2: Faces



Result 3: Foxes



Result 4: Foxes



Result 5: Foxes, Monkey, Dog and Birds



Result 6: Foxes

The answers of the above results



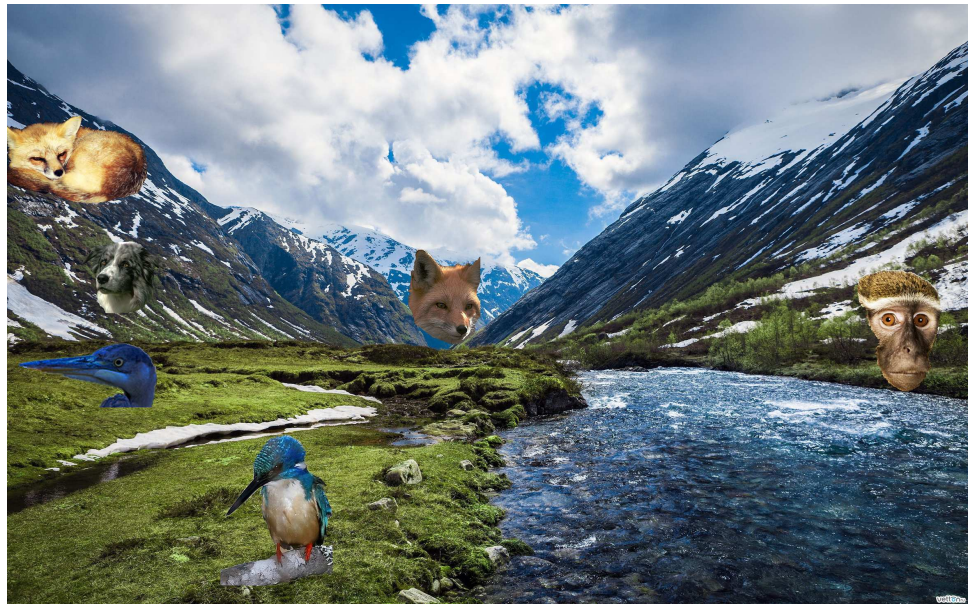
(a) Background

(b) Foregrounds



(c) Background

(d) Foregrounds



(e) Background

(f) Foregrounds